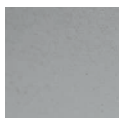




Telaio in metallo verniciato e pendagli in vetro verniciato o solo in vetro trasparente.

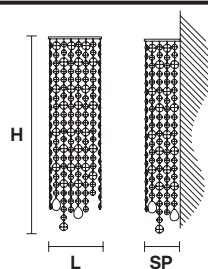
Powder coated metal frame and painted glass pendants or only transparent pendants.



V71
Painted matt nickel

VE 892 A2

Applique



TECHNICAL INFORMATION

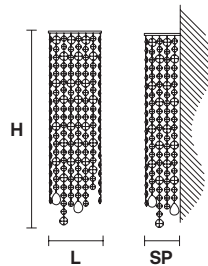
L 15 cm / 6.00"
SP 12 cm / 4.80"
H 70 cm / 27.60"
W 3 kg / 6.61 lb

LIGHTING SYSTEM

2xE14x10 W max
(not included).

VE 892 A2 TRASP

Applique



TECHNICAL INFORMATION

L 15 cm / 6.00"
SP 12 cm / 4.80"
H 70 cm / 27.60"
W 3 kg / 6.61 lb

LIGHTING SYSTEM

2xE14x10 W max
(not included).