

Design by: Masiero Lab



### MT



#### MT Traditional version

<b>LIGHTING</b>	Traditional E14 lightbulbs
<b>SIZE</b>	With lampshades, overall diameter is 5 cm (2") larger than specified
<b>FRAME</b>	<b>MT</b> Chrome or gold plated metal covered with transparent glass
<b>PENDANTS</b>	<b>MT</b> Transparent glass or crystal

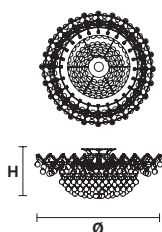
### RW/DW



#### RW RGB-W Led version DW Dynamic White Led version

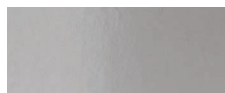
<b>LIGHTING</b>	WHITE LED sources CRI>90 <b>RGB-W</b> each light 330 Nominal lm at 3000K <b>DW</b> each light 490 Nominal lm at 4700K
<b>SIZE</b>	Same size as MT
<b>FRAME</b>	Chrome or gold plated metal covered with transparent glass
<b>PENDANTS</b>	Transparent glass or crystal

### VE 919/PL10



TECHNICAL INFORMATION	LIGHTING SYSTEM	VERSION
	STANDARD LIGHTING	CE
<b>Ø</b> 90 cm / 35.43" <b>H</b> 35 cm / 13.77" <b>W</b> 34 kg / 74.95 lb	10×E14×10 W max (not included). Triac Dimmable	<b>VE 919/PL10 MT</b>
	INTEGRATED LED LIGHTING	CE
	10×LED source -40 W tot Control system: DMX On request Radio Control and Masiero Smart Light App only for RW version.	<b>VE 919/PL10 RW/DW</b>

#### MT TRADITIONAL



G04 Shiny chrome

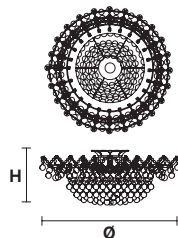


G03 Shiny gold

#### MT DYNAMIC WHITE



### VE 919/PL12

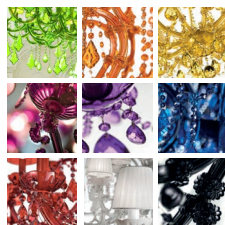


TECHNICAL INFORMATION	LIGHTING SYSTEM	VERSION
	STANDARD LIGHTING	CE
<b>Ø</b> 105 cm / 41.33" <b>H</b> 35 cm / 13.77" <b>W</b> 44 kg / 97 lb	12×E14×10 W max (not included). Triac Dimmable	<b>VE 919/PL12 MT</b>
	INTEGRATED LED LIGHTING	CE
	12×LED source -48 W tot Control system: DMX On request Radio Control and Masiero Smart Light App only for RW version.	<b>VE 919/PL12 RW/DW</b>

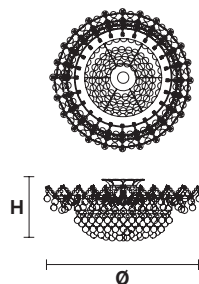
#### MT RGB - W - LED



#### MT COLOURED GLASS



### VE 919/PL20



TECHNICAL INFORMATION	LIGHTING SYSTEM	VERSION
	STANDARD LIGHTING	CE
<b>Ø</b> 130 cm / 51.18" <b>H</b> 45 cm / 17.71" <b>W</b> 80 kg / 176.36 lb	20×E14×10 W max (not included). Triac Dimmable	<b>VE 919/PL20 MT</b>
	INTEGRATED LED LIGHTING	CE
	20×LED source -80 W tot Control system: DMX On request Radio Control and Masiero Smart Light App only for RW version.	<b>VE 919/PL20 RW/DW</b>

: for the US market, refer to the relevant price list.