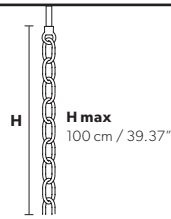


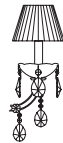
Design by: Masiero Lab



Standard chain



MT/CG



MT
Traditional version
CG
Coloured glass version

| | |
|--------------------|--|
| LIGHTING | Traditional E14 lightbulbs |
| SIZE | With lampshades, overall diameter is 5 cm (2") larger than specified |
| FRAME | MT Chrome or gold plated metal covered with transparent glass CG Painted metal covered with painted glass |
| LAMP SHADES | MT Organza ORG/14/RD CG Organza ORG/14/...COLOUR |
| PENDANTS | MT Transparent glass or crystal CG Coloured glass |

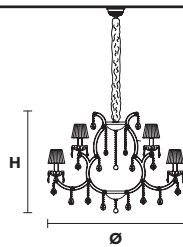
RW/DW



RW
RGB-W Led version
DW
Dynamic White Led version

| | |
|--------------------|--|
| LIGHTING | WHITE LED sources CRI>90 RGB-W each light 330 Nominal lm at 3000K DW each light 490 Nominal lm at 4700K |
| SIZE | Same size as MT or CG |
| FRAME | Chrome or gold plated metal covered with transparent glass |
| LAMP SHADES | No lampshades included |
| PENDANTS | Transparent glass or crystal |

VE 933/12



| TECHNICAL INFORMATION | LIGHTING SYSTEM | VERSION |
|---|--|----------------------------|
| Ø 80 cm / 31.49" H 65 cm / 25.59" W 20 kg / 44.09 lb | STANDARD LIGHTING 12x E14x10 W max (not included). Triac Dimmable | VE 933/12 MT-CG |
| | INTEGRATED LED LIGHTING 12x LED source - 48 W tot Control system: DMX On request Radio Control and Masiero Smart Light App only for RW version. | VE 933/12 RW/DW |

MT TRADITIONAL



G04 Shiny chrome



G03 Shiny gold

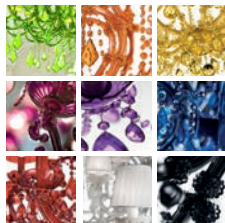
MT DYNAMIC WHITE



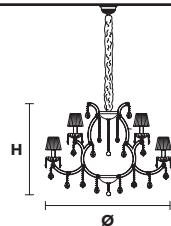
MT RGB - W - LED



MT COLOURED GLASS

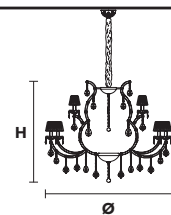


VE 933/15



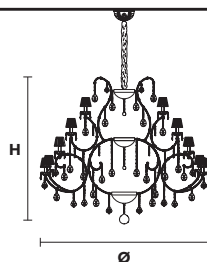
| TECHNICAL INFORMATION | LIGHTING SYSTEM | VERSION |
|---|--|----------------------------|
| Ø 80 cm / 31.49" H 65 cm / 25.59" W 20 kg / 44.09 lb | STANDARD LIGHTING 15x E14x10 W max (not included). Triac Dimmable | VE 933/15 MT-CG |
| | INTEGRATED LED LIGHTING 15x LED source - 40 W tot Control system: DMX On request Radio Control and Masiero Smart Light App only for RW version. | VE 933/15 RW/DW |

VE 933/24



| TECHNICAL INFORMATION | LIGHTING SYSTEM | VERSION |
|---|--|----------------------------|
| Ø 120 cm / 47.24" H 110 cm / 43.30" W 45 kg / 99.20 lb | STANDARD LIGHTING 24x E14x10 W max (not included). Triac Dimmable | VE 933/24 MT-CG |
| | INTEGRATED LED LIGHTING 24x LED source - 96 W tot Control system: DMX On request Radio Control and Masiero Smart Light App only for RW version. | VE 933/24 RW/DW |

VE 933/50



| TECHNICAL INFORMATION | LIGHTING SYSTEM | VERSION |
|--|--|----------------------------|
| Ø 160 cm / 62.99" H 155 cm / 61.02" W 83 kg / 182.98 lb | STANDARD LIGHTING 50x E14x10 W max (not included). Triac Dimmable | VE 933/50 MT-CG |
| | INTEGRATED LED LIGHTING 50x LED source - 200W tot Control system: DMX On request Radio Control and Masiero Smart Light App only for RW version. | VE 933/50 RW/DW |

: for the US market, refer to the relevant price list.