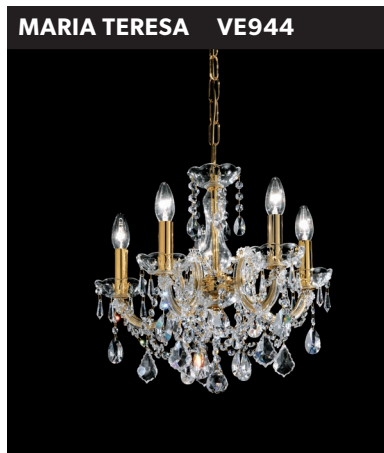
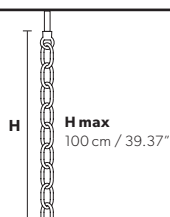


Design by: Masiero Lab



Standard chain

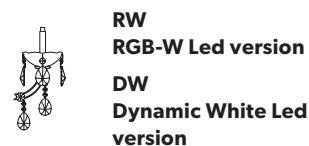


MT/CG



LIGHTING	Traditional E14 lightbulbs
SIZE	With lampshades, overall diameter is 5 cm (2") larger than specified
FRAME	MT Chrome or gold plated metal covered with transparent glass CG Painted metal covered with painted glass
LAMP SHADES	MT No lampshades included CG No lampshades included
PENDANTS	MT Transparent glass or crystal CG Coloured glass

RW/DW



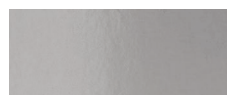
LIGHTING	RW WHITE LED sources CRI>90 RGB-W each light 330 Nominal lm at 3000K DW each light 490 Nominal lm at 4700K
SIZE	Same size as MT or CG
FRAME	Chrome or gold plated metal covered with transparent glass
LAMP SHADES	No lampshades included
PENDANTS	Transparent glass or crystal

VE 944/3



TECHNICAL INFORMATION	LIGHTING SYSTEM	VERSION
	STANDARD LIGHTING	
Ø 47 cm / 18.50" H 42 cm / 16.53" W 3.5 kg / 7.71 lb	3×E14×10 W max (not included). Triac Dimmable	VE 944/3 MT-CG
	INTEGRATED LED LIGHTING	
	3×LED source -12 W tot Control system: DMX On request Radio Control and Masiero Smart Light App only for RW version.	VE 944/3 RW/DW

MT TRADITIONAL



G04 Shiny chrome



G03 Shiny gold

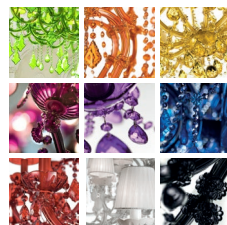
MT DYNAMIC WHITE



MT RGB - W - LED



MT COLOURED GLASS



VE 944/5



TECHNICAL INFORMATION	LIGHTING SYSTEM	VERSION
	STANDARD LIGHTING	
Ø 47 cm / 18.50" H 42 cm / 16.53" W 5 kg / 11.02 lb	5×E14×10 W max (not included). Triac Dimmable	VE 944/5 MT-CG
	INTEGRATED LED LIGHTING	
	5×LED source -20 W tot Control system: DMX On request Radio Control and Masiero Smart Light App only for RW version.	VE 944/5 RW/DW