

# VE 981

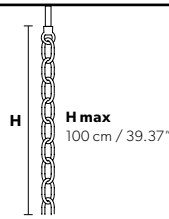
## Technical Info

# MASIERO

Design by: Masiero Lab



### Standard chain



### MT/CG



**MT**  
Traditional version  
**CG**  
Coloured glass version

**LIGHTING** Traditional E14 lightbulbs  
**SIZE** With lampshades, overall diameter is 5 cm (2") larger than specified  
**FRAME** **MT** Chrome or gold plated metal covered with transparent glass  
**CG** Painted metal covered with painted glass  
**LAMP SHADES** **MT** Organza ORG/14/AMB  
**CG** Organza ORG/14/...COLOUR  
**PENDANTS** **MT** Transparent glass or crystal  
**CG** Coloured glass

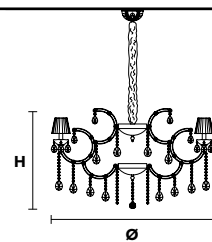
### RW/DW



**RW**  
RGB-W Led version  
**DW**  
Dynamic White Led version

**LIGHTING** WHITE LED sources CRI>90  
**RGB-W** each light 330 Nominal lm at 3000K  
**DW** each light 490 Nominal lm at 4700K  
**SIZE** Same size as MT or CG  
**FRAME** Chrome or gold plated metal covered with transparent glass  
**LAMP SHADES** No lampshades included  
**PENDANTS** Transparent glass or crystal

### VE 981/12



#### TECHNICAL INFORMATION

Ø 106 cm / 41.73"  
H 70 cm / 27.55"  
W 20 kg / 44.09 lb

#### LIGHTING SYSTEM

STANDARD LIGHTING

12×E14×10 W max (not included).  
Triac Dimmable

#### VERSION



**VE 981/12 MT-CG**

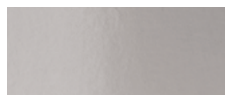
#### INTEGRATED LED LIGHTING



12×LED source – 48 W tot  
Control system: DMX  
On request Radio Control and Masiero Smart Light App only for RW version.

**VE 981/12 RW/DW**

#### MT TRADITIONAL



G04 Shiny chrome

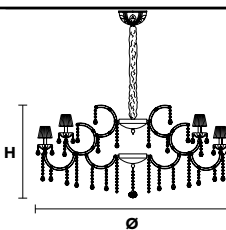


G03 Shiny gold

#### MT DYNAMIC WHITE



### VE 981/24



#### TECHNICAL INFORMATION

Ø 140 cm / 55.11"  
H 70 cm / 27.55"  
W 40 kg / 88.18 lb

#### LIGHTING SYSTEM

STANDARD LIGHTING

24×E14×10 W max (not included).  
Triac Dimmable

#### VERSION



**VE 981/24 MT-CG**

#### INTEGRATED LED LIGHTING



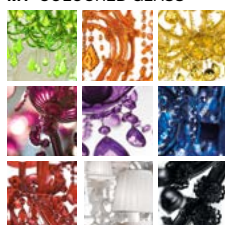
24×LED source – 96 W tot  
Control system: DMX  
On request Radio Control and Masiero Smart Light App only for RW version.

**VE 981/24 RW/DW**

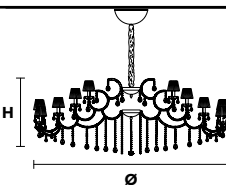
#### MT RGB - W - LED



#### MT COLOURED GLASS



### VE 981/60



#### TECHNICAL INFORMATION

Ø 220 cm / 86.61"  
H 75 cm / 29.52"  
W 72 kg / 158.73 lb

#### LIGHTING SYSTEM

STANDARD LIGHTING

60×E14×10 W max (not included).  
Triac Dimmable

#### VERSION



**VE 981/60 MT-CG**

#### INTEGRATED LED LIGHTING



60×LED source – 240 W tot  
Control system: DMX  
On request Radio Control and Masiero Smart Light App only for RW version.

**VE 981/60 RW/DW**

Ⓢ : for the US market, refer to the relevant price list.