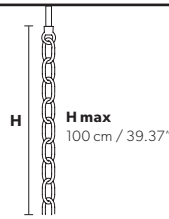


Design by: Masiero Lab

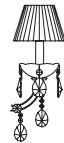
### MARIA TERESA VE986



#### Standard chain



#### MT/CG



**MT**  
Traditional version  
**CG**  
Coloured glass version

**LIGHTING** Traditional E14 lightbulbs  
**SIZE** With lampshades, overall diameter is 5 cm (2") larger than specified  
**FRAME** **MT** Chrome or gold plated metal covered with transparent glass  
**CG** Painted metal covered with painted glass  
**LAMP SHADES** **MT** Damask DAM/14/GD-GD  
**CG** Organza ORG/14/...COLOUR  
**PENDANTS** **MT** Transparent glass or crystal  
**CG** Coloured glass

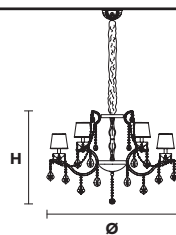
#### RW/DW



**RW**  
RGB-W Led version  
**DW**  
Dynamic White Led version

**LIGHTING** WHITE LED sources CRI>90  
**RGB-W** each light 330 Nominal lm at 3000K  
**DW** each light 490 Nominal lm at 4700K  
**SIZE** Same size as MT or CG  
**FRAME** Chrome or gold plated metal covered with transparent glass  
**LAMP SHADES** No lampshades included  
**PENDANTS** Transparent glass or crystal

### VE 986/15



#### TECHNICAL INFORMATION

**Ø** 95 cm / 37.40"  
**H** 70 cm / 27.55"  
**W** 18 kg / 39.68 lb

#### LIGHTING SYSTEM

STANDARD LIGHTING

15×E14×10 W max (not included).  
Triac Dimmable

#### VERSION



**VE 986/15 MT-CG**

#### INTEGRATED LED LIGHTING



15×LED source – 60 W tot  
Control system: DMX  
On request Radio Control and Masiero Smart Light App only for RW version.

**VE 986/15 RW/DW**

#### MT TRADITIONAL



G04 Shiny chrome



G03 Shiny gold

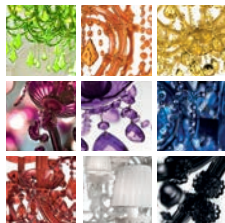
#### MT DYNAMIC WHITE



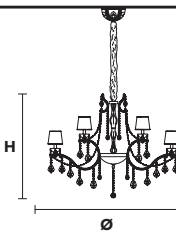
#### MT RGB - W - LED



#### MT COLOURED GLASS



### VE 986/18



#### TECHNICAL INFORMATION

**Ø** 135 cm / 53.14"  
**H** 90 cm / 35.43"  
**W** 30 kg / 66.13 lb

#### LIGHTING SYSTEM

STANDARD LIGHTING

18×E14×10 W max (not included).  
Triac Dimmable

#### VERSION



**VE 986/18 MT-CG**

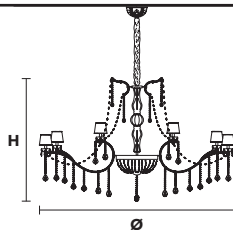
#### INTEGRATED LED LIGHTING



18×LED source – 72 W tot  
Control system: DMX  
On request Radio Control and Masiero Smart Light App only for RW version.

**VE 986/18 RW/DW**

### VE 986/39



#### TECHNICAL INFORMATION

**Ø** 190 cm / 74.80"  
**H** 125 cm / 49.21"  
**W** 70 kg / 154.32 lb

#### LIGHTING SYSTEM

STANDARD LIGHTING

39×E14×10 W max (not included).  
Triac Dimmable

#### VERSION



**VE 986/39 MT-CG**

#### INTEGRATED LED LIGHTING



39×LED source – 156 W tot  
Control system: DMX  
On request Radio Control and Masiero Smart Light App only for RW version.

**VE 986/39 RW/DW**

### VE 986/A3



#### TECHNICAL INFORMATION

**L** 50 cm / 19.69"  
**SP** 25 cm / 9.84"  
**H** 55 cm / 21.64"

#### LIGHTING SYSTEM

STANDARD LIGHTING

3×E14×10 W max (not included).  
Triac Dimmable

#### VERSION



**VE 986/A3 MT-CG**

#### INTEGRATED LED LIGHTING



3×LED source – 12 W tot  
Control system: DMX  
On request Radio Control and Masiero Smart Light App only for RW version.

**VE 986/A3 RW/DW**

: for the US market, refer to the relevant price list.