

Design by: Masiero Lab



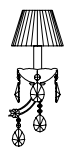
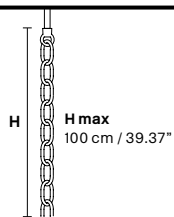
MARIA TERESA VE991

### Standard chain

### MT/CG



### RW/DW



**MT**  
Traditional version  
**CG**  
Coloured glass version

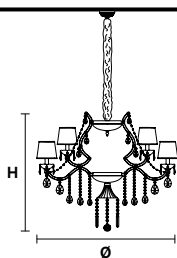


**RW**  
RGB-W Led version  
**DW**  
Dynamic White Led version

**LIGHTING** Traditional E14 lightbulbs  
**SIZE** With lampshades, overall diameter is 5 cm (2") larger than specified  
**FRAME** **MT** Chrome or gold plated metal covered with transparent glass  
**CG** Painted metal covered with painted glass  
**LAMP SHADES** **MT** Filo BRILL/14/CR  
**CG** Organza ORG/14/...COLOUR  
**PENDANTS** **MT** Transparent glass or crystal  
**CG** Coloured glass

**LIGHTING** **RW** WHITE LED sources CRI>90  
**RGB-W** each light 330 Nominal lm at 3000K  
**DW** each light 490 Nominal lm at 4700K  
**SIZE** Same size as MT or CG  
**FRAME** Chrome or gold plated metal covered with transparent glass  
**LAMP SHADES** No lampshades included  
**PENDANTS** transparent glass or crystal

### VE 991/15



**TECHNICAL INFORMATIONS**  
**Ø** 95 cm / 37.40"  
**H** 65 cm / 25.59"  
**W** 17 kg / 37.47 lb

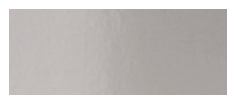
**LIGHTING SYSTEM**  
15×E14×40 W max (not included).  
Triac Dimmable

**VERSION**  
**VE 991/15 MT - CG**

15×LED source - 60 W tot  
Control system: DMX  
On request Radio Control and Masiero Smart Light App only for RW version.

**VE 991/15 RW/DW**

#### MT TRADITIONAL

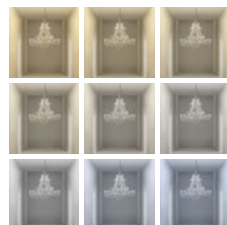


G04 Shiny chrome



G03 Shiny gold

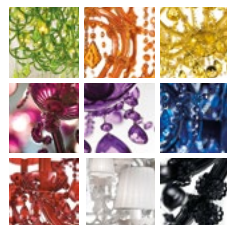
#### MT DYNAMIC WHITE



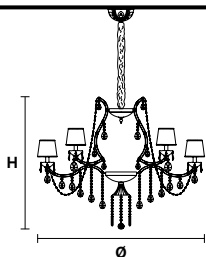
#### MT RGB - W - LED



#### MT COLOURED GLASS



### VE 991/24



**TECHNICAL INFORMATIONS**  
**Ø** 140 cm / 55.11"  
**H** 100 cm / 39.37"  
**W** 30 kg / 66.13 lb

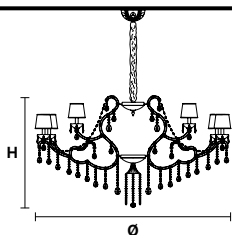
**LIGHTING SYSTEM**  
24×E14×40 W max (not included).  
Triac Dimmable

**VERSION**  
**VE 991/24 MT - CG**

24×LED source - 96 W tot  
Control system: DMX  
On request Radio Control and Masiero Smart Light App only for RW version.

**VE 991/24 RW/DW**

### VE 991/36



**TECHNICAL INFORMATIONS**  
**Ø** 165 cm / 64.96"  
**H** 95 cm / 37.40"  
**W** 50 kg / 110.23 lb

**LIGHTING SYSTEM**  
36×E14×40 W max (not included).  
Triac Dimmable

**VERSION**  
**VE 991/36 MT - CG**

36×LED source - 144 W tot  
Control system: DMX  
On request Radio Control and Masiero Smart Light App only for RW version.

**VE 991/36 RW/DW**