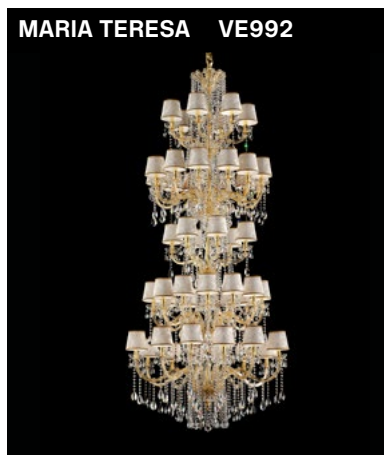
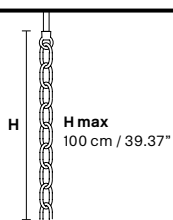


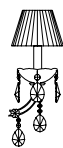
Design by: Masiero Lab



Standard chain



MT/CG



MT
Traditional version
CG
Coloured glass version

LIGHTING Traditional E14 lightbulbs
SIZE With lampshades, overall diameter is 5 cm (2") larger than specified
FRAME **MT** Chrome or gold plated metal covered with transparent glass
CG Painted metal covered with painted glass
LAMP SHADES **MT** Damask DAM-2BD/14/IV
CG Organza ORG/14/...COLOUR
PENDANTS **MT** Transparent glass or crystal
CG Coloured glass

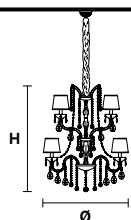
CE RW/DW



RW
RGB-W Led version
DW
Dynamic White Led version

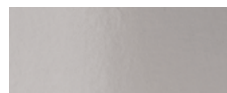
LIGHTING WHITE LED sources CRI>90
RGB-W each light 330 Nominal lm at 3000K
DW each light 490 Nominal lm at 4700K
SIZE Same size as MT or CG
FRAME Chrome or gold plated metal covered with transparent glass
LAMP SHADES No lampshades included
PENDANTS transparent glass or crystal

VE 992/18



TECHNICAL INFORMATIONS	LIGHTING SYSTEM	VERSION
Ø 85 cm / 33.46" H 100 cm / 39.37" W 25 kg / 55.11 lb	18×E14×40 W max (not included). Triac Dimmable	VE 992/18 MT - CG
	18×LED source - 72 W tot Control system: DMX On request Radio Control and Masiero Smart Light App only for RW version.	VE 992/18 RW/DW

MT TRADITIONAL

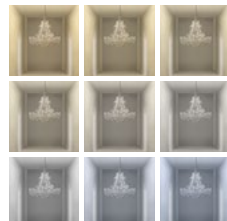


G04 Shiny chrome



G03 Shiny gold

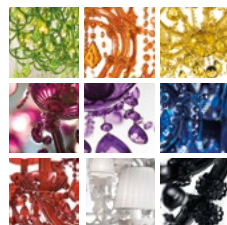
MT DYNAMIC WHITE



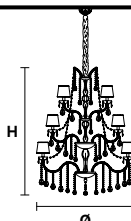
MT RGB - W - LED



MT COLOURED GLASS

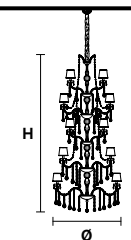


VE 992/30



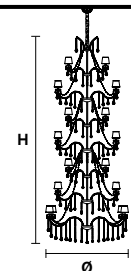
TECHNICAL INFORMATIONS	LIGHTING SYSTEM	VERSION
Ø 115 cm / 45.27" H 140 cm / 55.12" W 40 kg / 88.18 lb	30×E14×40 W max (not included). Triac Dimmable	VE 992/30 MT - CG
	30×LED source - 120 W tot Control system: DMX On request Radio Control and Masiero Smart Light App only for RW version.	VE 992/30 RW/DW

VE 992/48



TECHNICAL INFORMATIONS	LIGHTING SYSTEM	VERSION
Ø 120 cm / 47.24" H 240 cm / 94.49" W 80 kg / 176.37 lb	48×E14×40 W max (not included). Triac Dimmable	VE 992/48 MT - CG
	48×LED source - 192 W tot Control system: DMX On request Radio Control and Masiero Smart Light App only for RW version.	VE 992/48 RW/DW

VE 992/70



TECHNICAL INFORMATIONS	LIGHTING SYSTEM	VERSION
Ø 150 cm / 59.05" H 380 cm / 149.60" W 100 kg / 220.4 lb	70×E14×40 W max (not included). Triac Dimmable	VE 992/70 MT - CG
	70×LED source - 280 W tot Control system: DMX On request Radio Control and Masiero Smart Light App only for RW version.	VE 992/70 RW/DW

: for the US market, refer to the relevant price list.